



RoHS

TOPTEK®  
HARDWARE ELECTRONIC MANUFACTURER



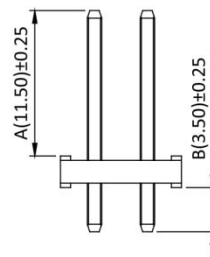
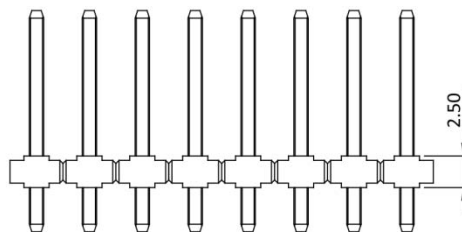
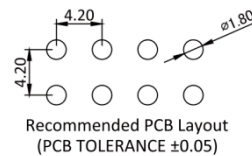
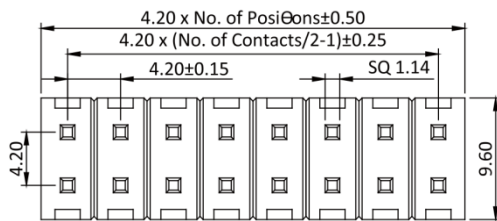
## Pin Header 4.2mm 2 Row H=2.5mm Straight Type

### Specifications

Current Rate:7 AMP  
Insulation Resistance:1000MΩ Min.  
Contact Resistance:20mΩ Max.  
Dielectric Voltage:1000V AC for one minute  
Operation Temperature:-40°C to +105°C

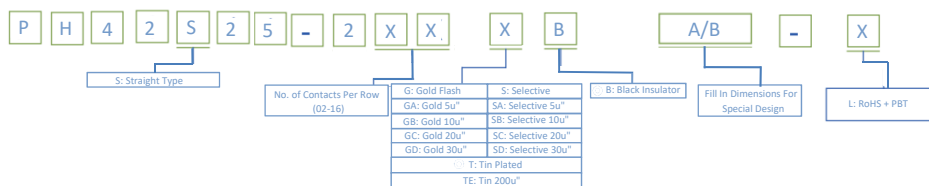
### Material

Insulator:Polyster,UL 94V-0  
© Standard SMT:LCP  
Straight:Nylon 66  
Terminal:Copper Alloy  
Plating:Tin Plated



Part No.:PS42S25-2XX-X

## ORDER INFORMATION



©:Standard Recommend

